

FLUKE®

T5-600/T5-1000

Electrical Tester

Instruction Card

⚠ Warning

Read the T5-600/T5-1000 Safety Sheet before using this tester.

Před použitím této zkoušečky si přečtete bezpečnostní informace k modelu T5-600/T5-1000.

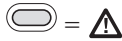
Przed użyciem próbnika należy przeczytać instrukcje dotyczące bezpieczeństwa zamieszczone w dokumencie T5-600/T5-1000.

Перед использованием данного измерительного прибора прочтите Инструкции по технике безопасности T5-600/T5-1000.

Bu test cihazını kullanmadan önce T5-600/T5-1000 Güvenlik Broşürü'nü okuyun.

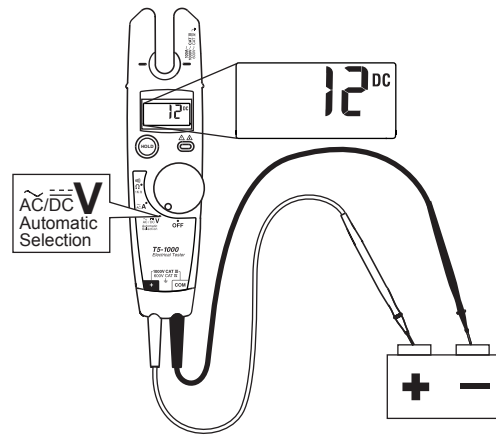
اقرأ ورقة السلامة الخاصة بـ T5-600/T5-1000 قبل استخدام جهاز الاختبار هذا.

Voltage Indicator

 = ⚠

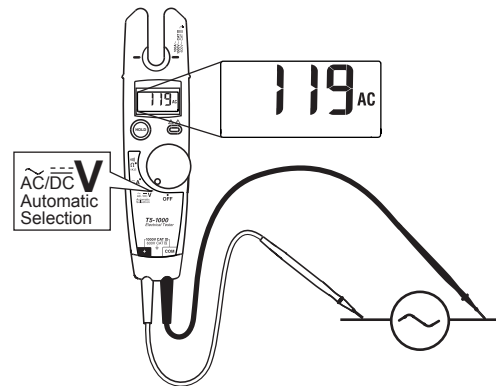
V

T5-600 max: 600 V CAT III
T5-1000 max: 1000 V CAT III, 600 V CAT IV

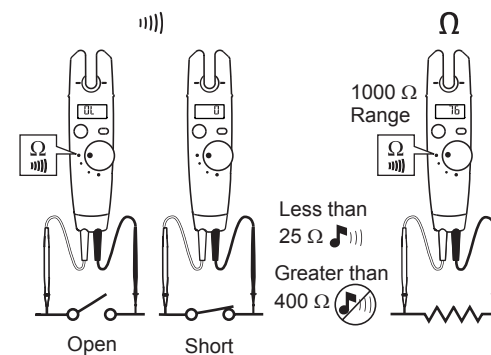


V

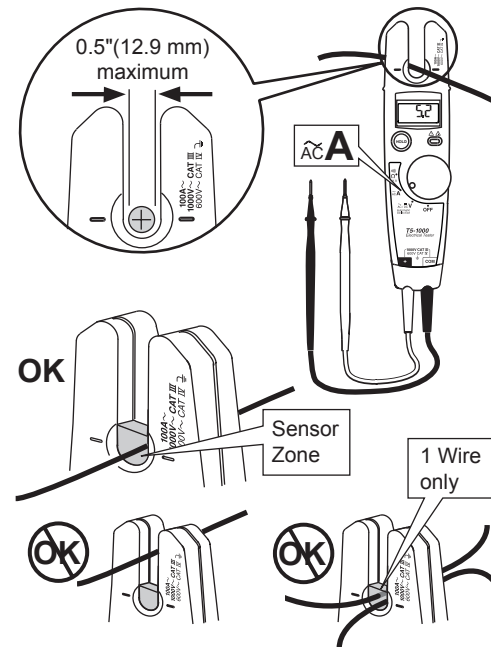
45 Hz - 66 Hz
T5-600 max: 600 V rms CAT III
T5-1000 max: 1000 V rms CAT III, 600 V rms CAT IV



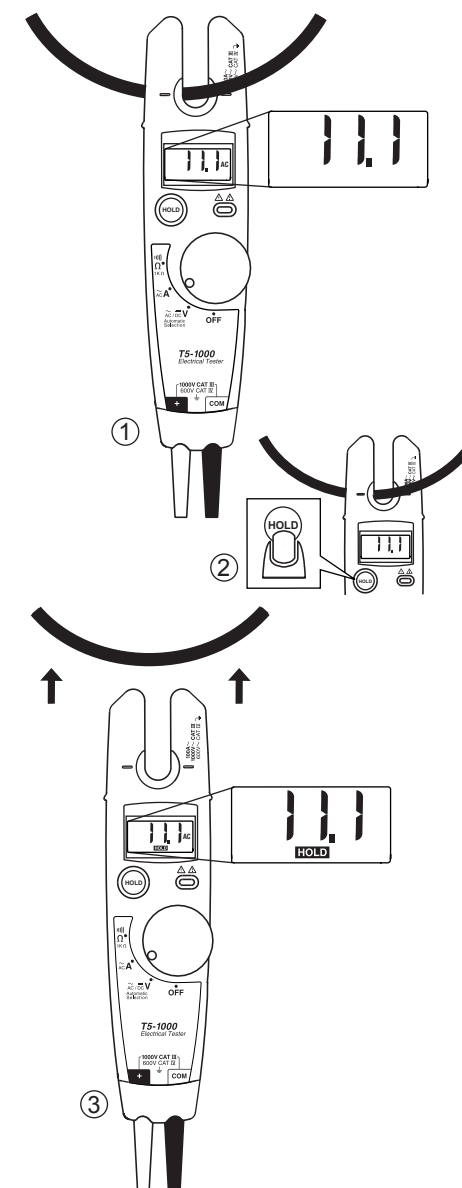
Continuity & Resistance Ω



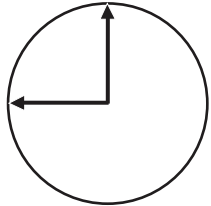
~A



Display HOLD

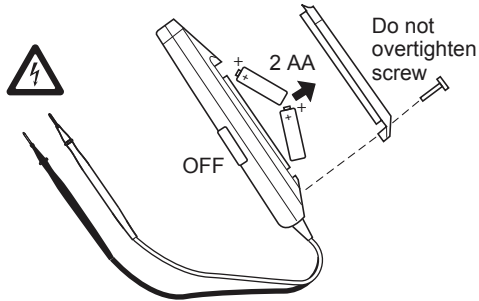


Auto Off



45 min

LO +



Warning

Disconnect test leads from power source before opening battery door.

Před otevřením krytu baterie odpojte od zdroje napájení měřicí přívody.

Przed otwarciem wnętrza baterii należy odłączyć przewody testowe od źródła zasilania.

Перед тем как открыть крышку батарейного отсека, отсоедините измерительные провода.

Pil kapağını açmadan önce test iletkenlerinin güç kaynağıyla bağlantısını kesin.

قم بفصل أطراف الاختبار من مصدر الطاقة.

Specifications

Specifications subject to change without notice.

Calibration	1-year calibration cycle
Temperature Operating: Storage:	-10 °C to +50 °C (14 °F to 122 °F) -30 °C to +60 °C (-22 °F to +140 °F)
Altitude Operating: Storage:	2000 m (6562 ft) 10,000 m (32808 ft)
Relative Humidity	0 % to 95 %, 5 °C to 30 °C (41 °F to 86 °F); 0 % to 75 %, 30 °C to 40 °C (86 °F to 104 °F); 0 % to 45 %, 40 °C to 50 °C (104 °F to 122 °F)
Battery Type and Life	AA (2); 360 hours continuous with alkaline; 125 hours continuous with zinc chloride
RF Field Specification	0.5 % full scale + (specified accuracy) at 3 V / m
Enclosure Rating	IP 52 per IEC 60529, no vacuum applied
Safety	Complies with ANSI/ISA-S82.01-94, UL classified to IEC 61010, CSA/CAN C22.2 No.1010.1-92, and EN 61010-1: 1995.
EMC	EN 61326
Temperature coefficient	0.1 x (specified accuracy) / °C for <18 °C or >28 °C (< 64.4 °F or > 82.4 °F)
Accuracy	± ([% of reading] + [number of least significant digits]) Accuracy is specified for 1 year after calibration, at 18 °C to 28 °C (64 °F to 82 °F) with relative humidity to 90 %. AC conversions are ac-coupled, average responding, and calibrated to the rms value of a sine wave input.
CAT III protects against transients in a <i>fixed equipment installation</i> such as a distribution panel, and lighting systems in large buildings.	
CAT IV protects against transients from a <i>primary supply</i> such as an electricity meter or an overhead or underground utility service.	

Function	T5-600 Range	T5-1000 Range	Resolution	Accuracy
V̇	600 V rms	1000 V rms	1 V	± (1.5 % + 2 digits)
V̄	600 V	1000 V	1 V	± (1 % + 1 digit)
Ā	100.0 A	100.0 A	0.1 A	± (3 % + 3 digits)
	1000 V CAT III 600 V CAT IV			
Ω	1000	1000	1	± (1 % + 2 digits)

Certifications:	CE	SR	CLASSIFIED UL In accordance with IEC 61010-1, 54CJ
------------------------	----	----	--

Replacement Parts

Test Lead Assembly. Replace only with Fluke double-insulated leads (□). See "Accessories" for available probes.	PN 648029
Battery Door	PN 2091779
Battery Door Screw	PN 1618578

Accessories

H5 Belt Holster
TP1 Probe Set, Flat-Blade
AC285 SureGrip™ Alligator Clips
AC220 SureGrip™ Alligator Clips
Service Information Sheet, PN 686953

To contact Fluke, call:

USA: 1-888-99-FLUKE (1-888-993-5853)
Canada: 1-800-36-FLUKE (1-800-363-5853)
Europe: +31 402-675-200
Japan: +81-3-3434-0181
Singapore: +65-738-5655
Anywhere in the world: +1-425-446-5500

Visit Fluke's Web site at www.fluke.com.